

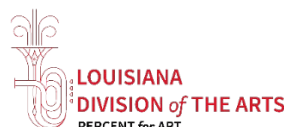


PERCENT *for* ART CALL FOR ARTISTS

LSU ALEXANDRIA STUDENT SUCCESS CENTER INTERIOR INSTALLATION



This opportunity is possible through the Louisiana Percent for Art program, which is administered by the Office of Cultural Development /Division of the Arts in the Department of Culture Recreation and Tourism of the State of Louisiana, in collaboration with the Division of Administration and the Office of Facility Planning and Control.



ARTIST OPPORTUNITY: CALL FOR ARTISTS

OVERVIEW

The Louisiana Percent for Art Program invites professional artists and artist teams to submit their qualifications for the creation of an original, site-specific artwork for the atrium of the new Student Success Center at **Louisiana State University Alexandria (LSUA)**. This state-of-the-art facility will be a vibrant hub for student-centered services and a symbol of LSUA's commitment to fostering academic achievement and career readiness.

This commission is open nationally to professional artists 18 and over.

ELIGIBILITY

This call for artists is open to professional artists and artist teams 18 and over, regardless of race, color, religion, national origin, gender identification, military status, sexual orientation, marital status, or physical ability. Those applying should have experience in public art and large-scale installations. Artists must demonstrate a proven track record of successfully completing projects of similar scope.

Artist teams may apply and must designate one artist as the lead contact. **Examples of work submitted must be original, recently completed artwork (within the last ten years).**

The application, including all examples of work and supporting documents, is considered the artist's official "submission." If any information submitted by the artist or artist's representative, including all supporting documents, is found fraudulent, the submission will be disqualified.

BUDGET

The proposal selected by the selection committee will include an all-inclusive budget of **\$85,000** to cover all costs associated with the project and commensurate with the intended scale, including but not limited to research, professional consultations, formal reports from licensed structural and electrical engineers where appropriate, a long-term care and maintenance report from a licensed professional conservator, materials, fabrication, foundation, lighting, transportation, travel, insurance, installation, and photography and documentation of the artwork.

BACKGROUND

Louisiana State University at Alexandria (LSUA) is a public university located in Alexandria, Louisiana, committed to enhancing the educational experiences of its diverse student body. LSUA serves as a hub for academic and personal growth, offering a wide array of programs designed to meet the needs of students and the community. The university is dedicated to fostering an inclusive environment that promotes student engagement, success, and well-being.

The New Student Success Center will be a pivotal addition to the LSUA campus, serving as a central point for student resources, academic advising, counseling, and career services. It aims to create a welcoming atmosphere for new students and facilitate their transition to university life, promoting student retention and success.

The Success Center is designed to provide approximately 30,000 square feet of space dedicated to student support services. The facility will include collaborative study areas, meeting rooms, and a central atrium that serves as a gathering space for students. This atrium will be the focal point of the building and is envisioned to foster community, connection, and engagement among students.

PROJECT GOALS

The art installation will be located in the atrium of the New Student Success Center. The artwork should be site-specific, low maintenance, and may be suspended or free-standing within the interior space. It must integrate seamlessly with the building's construction and architectural design, ensuring harmony between the installation and its surroundings. The artwork should embody the vision, values, and mission of LSUA and the New Student Success Center, reflecting themes of student success, inclusivity, and community engagement.

Artists are encouraged to create a dynamic piece that resonates with the university's commitment to academic excellence and enhances the overall aesthetic of the space. The installation should invite interaction, inspire curiosity, and contribute to a sense of belonging for all students and visitors.

The artwork may include but is not limited to, sculpture, mixed-media installations, stained glass, kinetic art, interactive art, murals, or panels (featuring elements such as paint, mosaics, or digital screens, thoughtfully designed to integrate seamlessly with the architectural surfaces). Please note that free-standing sculptures will be subject to size limitations to ensure they fit proportionally within the atrium's spatial constraints and do not obstruct pathways or sightlines.

Artists are encouraged to consider innovative materials and approaches that align with the themes of the project and enhance the integration of the artwork into the building's design, creating a cohesive and immersive environment.

SUBMISSION REQUIREMENTS

Application materials must be received by **April 30, 2025, via the Call for Entry (CaFÉ) system available online at www.callforentry.org. Deadlines in CaFÉ are at 11:59 PM Mountain Time Zone [Denver, Colorado, USA] on the deadline day.**

The CAFÉ system will remain open until 11:59 PM MDT on April 30th. Staff will only be available for technical or website assistance Monday – Friday from 8:30 AM – 5:00 PM MDT (*Holidays may affect this time*). Applicants are encouraged to apply early to reduce the risk of technical difficulties. Staff will not accept incomplete or late submissions for any reason.

A complete application must include the following:

- **Artist résumé** demonstrating at least five (5) years of professional visual art experience (**NOT STUDENT WORK**). If submitting as a team, a current résumé should be submitted for each team member (compiled into one document). A biography will not be accepted in place of a résumé.
- A **Letter of Interest** making a brief statement (no more than one page) outlining your interest in the project, artistic vision, and relevant experience.
- **References** with the names and current contact details of **three** people you have previously partnered with, worked with, or commissioned your work.
References will be contacted for artists invited to develop a proposal for the commission.
- **Images (up to 10)** of your **original completed** commissions or artworks, not proposals, which demonstrate your ability to create large-scale exterior installations. 3-D models, sketches, or drawings will not be accepted. You must include the title, medium, dimensions, project budget (price), year completed, location, and description. The value must be indicated in US dollars. Each image must contain only one view of the work.
- Up to 3 **videos** (optional) of work examples

Image specifications: JPG, PNG - Maximum size per image 5MB, total 30MB.

*Slides, emailed prints, or any physical submissions will NOT be accepted.

SELECTION PROCESS & EVALUATION CRITERIA

A Selection Committee comprised of a project manager from the Louisiana Office of Facility Planning & Control, the building architect or design professionals, representatives from the site, professional artist(s), and a member of the State Arts Council will review the submitted qualifications. The committee will shortlist a group of finalists, who will then be invited to submit a detailed proposal for the project.

Submissions are evaluated by:

- Appropriateness of the artist's medium, style, and previous experience as they relate to the project goals and setting
- Experience with projects of a similar scale and scope
- Ability to create site-specific or site-reactive works
- Availability to participate in the design and implementation of the project as required
- Special consideration will be given to Louisiana artists as defined by La. R.S.25:9000.1(E)

NOTIFICATIONS

Artists will be notified of their status no later than the end of **May 2025**. A full timeline will be provided to those finalists who have been shortlisted.

Finalists will be required to attend two (2) meetings: A site visit to meet with the selection committee and to view the space and the presentation of the artist's proposal before the selection committee.

An honorarium of \$1,500 will be paid to artists to offset expenses associated with the development of proposals and travel.

NOTE: *"The Percent for Art Program and the Artist Selection Committee reserves the right to change, modify, or revise the Call to Artists, in part or whole, at any time before the submittal deadline without prior notice. Any changes, modifications, or revisions can be found [here](#). The Percent for Art Program and the Artist Selection Committee also reserves the right to reject any or all applications or proposals, to reject any finalist, or to terminate the selection process for any project without prior notice."*

The Louisiana Percent for Art Program was established by law in the 1999 legislative session. The law specifies that on projects using more than \$2,000,000.00 in state funds, one percent (1%) of the expenditure for construction or renovation of a state building shall be for works of art by artists and craftsmen for the building or its grounds.

Please direct questions about the Percent for Art Program or this project to:

Scott Finch, Director

Phone: 225-342-8176 Email: sfinch@crt.la.gov

April Baham, Project Manager

Phone: 225-342-6083 Email: abaham@crt.la.gov

RENDERINGS



SOUTH ELEVATION



WEST ELEVATION

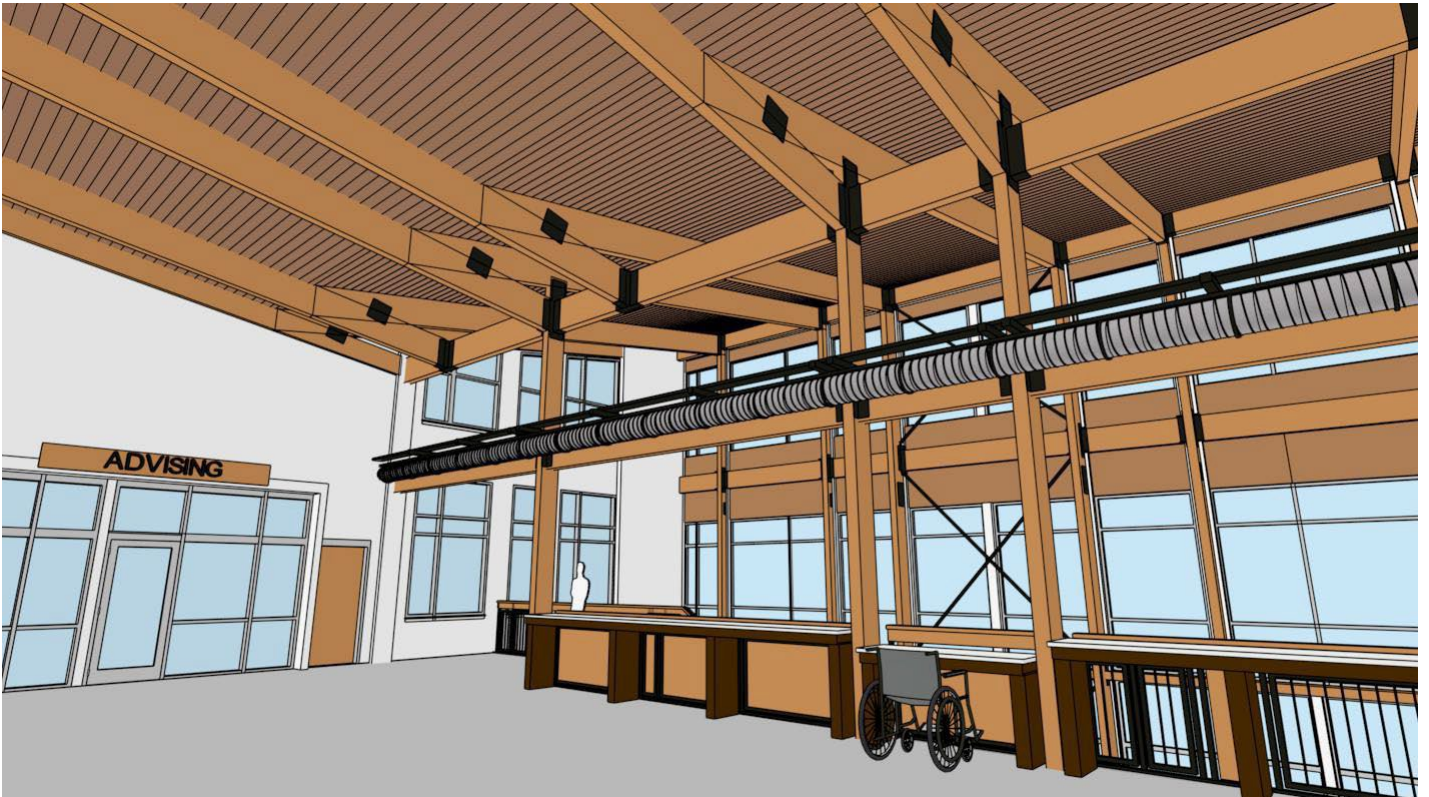


NORTH ELEVATION

FIRST FLOOR VIEW



SECOND FLOOR VIEW



SECOND FLOOR VIEW

